

Coming from Deurne take the **N270** towards **Helmond**

Continue along the **N270** until the crossing **Deurneseweg - Burgemeester van Houtlaan**

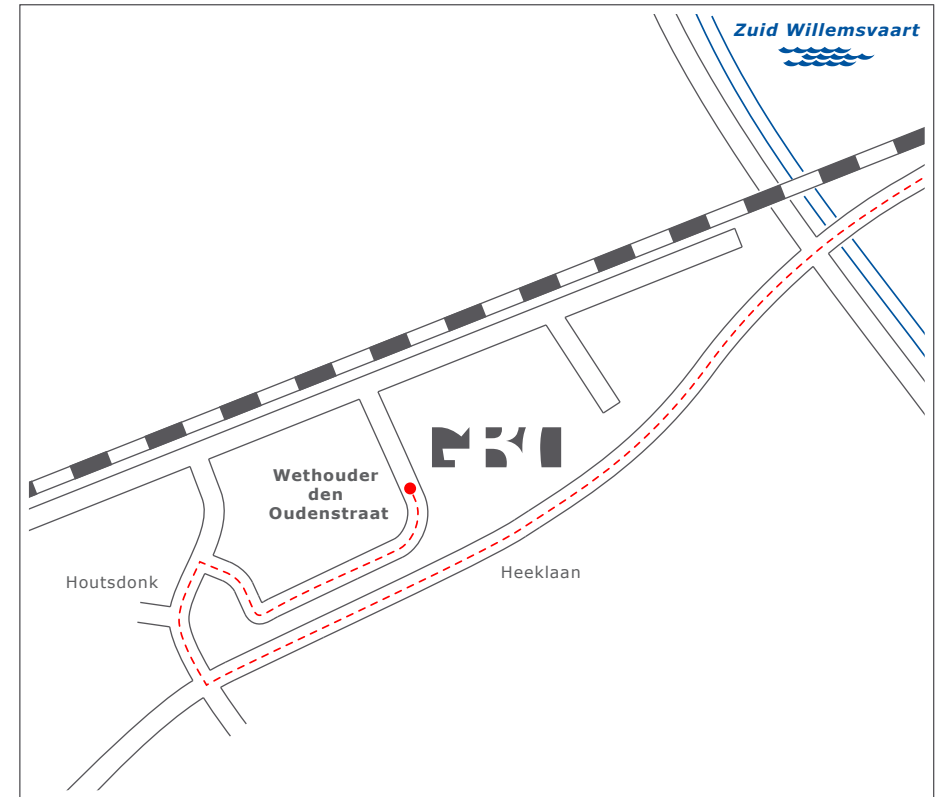
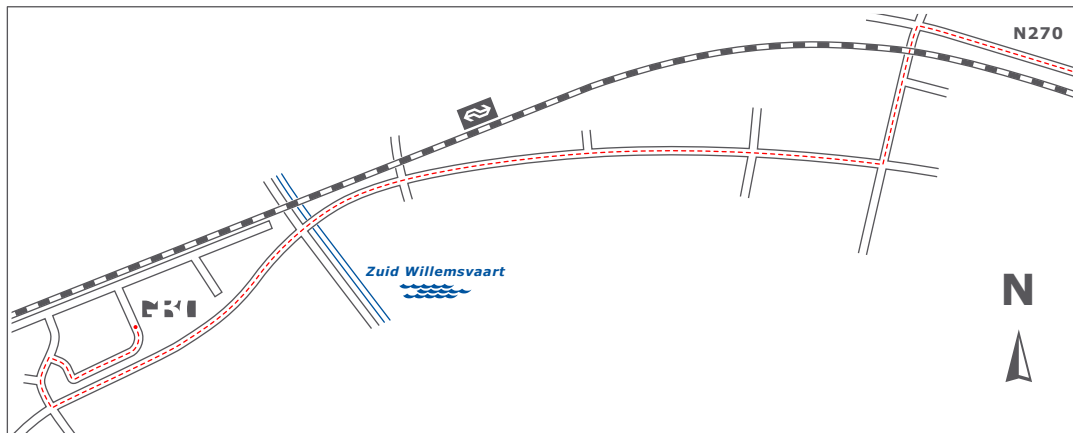
Turn left, (level crossing) **Churchillaan**

Take the first to the right **Engelseweg**

After the canal it becomes the **Heeklaan**

Then two times the first to the right, you're now at the **Wethouder den Oudenstraat**

Our office is located at nr. **6**



GBO Design - Engineering
Wethouder den Oudenstraat 6
Postbus 838
5700 AV Helmond

T +31(0) 492 599555
F +31(0) 492 599518
E info@gbo.nl
W www.gbo.nl